



DESIGN, CONSTRUCTION AND
MAINTENANCE OF **PADEL COURTS**

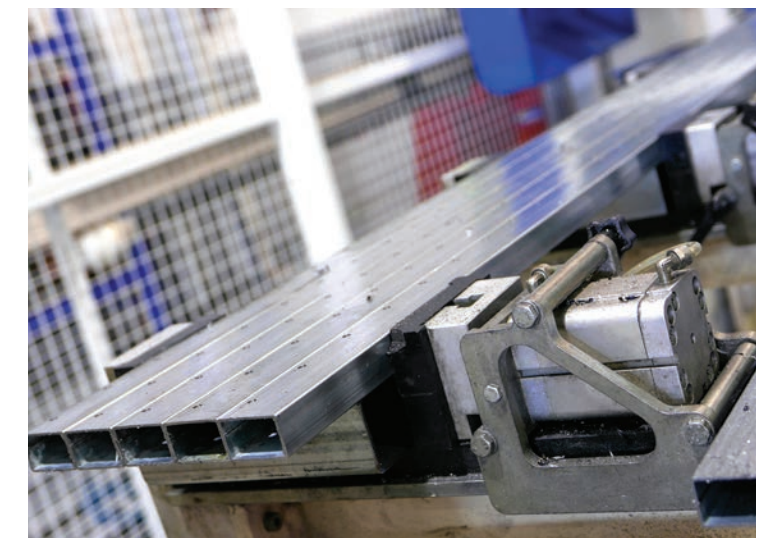
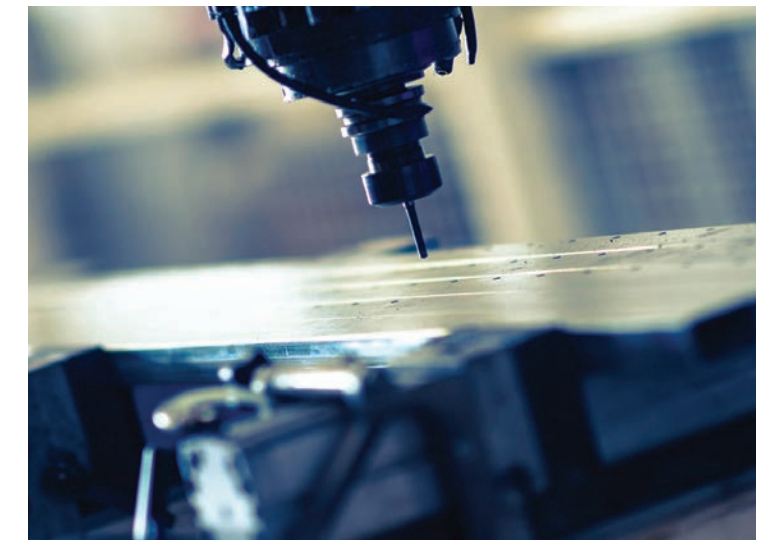


Welcome to Padel Tech

Padel Tech was founded in order to provide an exclusive service in the design and construction of indoor and outdoor padel facilities.

With more than 10 years' experience and a team of experts fully involved in the management, construction and maintenance of sporting facilities, we have achieved an excellent position as a firm capable of taking on all challenges in the padel world.

Our dedication to offering the best services and products is the result of our commitment to quality and innovation. At Padel Tech we work hard to offer quality services and products tailored to meet the specific needs of our clients. You decide what you need, and we make it happen.

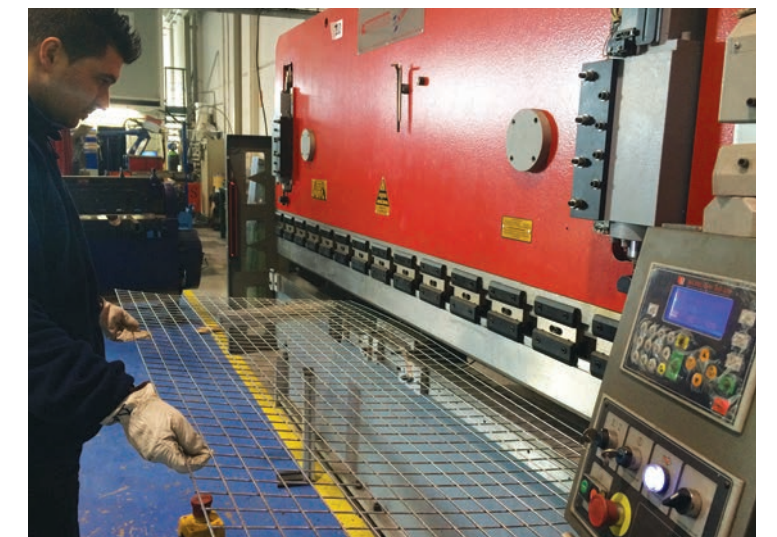


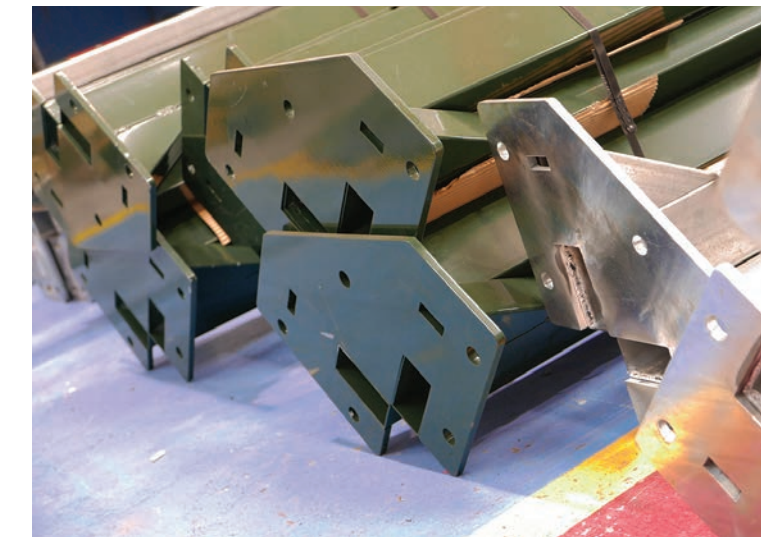
Design and manufacture of padel courts



We have a team of technical staff specializing in design, engineering and construction. Our professional team carries out continual improvement processes to the integrated solutions we employ in the manufacturing process.

We have the right product development technology, a proven track record for the manufacturing of the products we produce and a high production capacity which also allows constant evolution. We manufacture our own courts to meet the criteria and industry standards according to British Padel, International Padel Federation and Spanish Padel Federation.





Padel Tech Pro Court



This court stays true to its origins, it is a pillars type structure and newly designed anti-injury mesh infill panels. The court is available for outdoor installation in a fully galvanized product manufactured in steel DX51D+Z and solid structure finished with anti-corrosion treatment and polyester coating with 10 or 12mm approved glass.

Coupled with the latest technology in artificial grass this allows us to maximize the performance of your investment over the long term. Ideal for both indoor and outdoor facilities, amateurs and professionals alike, the Padel Tech Pro Court offers unbeatable stability and attractive, minimalist aesthetics.

- Hot dip Galvanised
- Mesh folded with anti-injury system
- Laser cut anchor plates with an opening to insert pillars
- 2.2m high World Padel Tour door
- Net tensor hidden within the central post
- 8 x 400W halide floodlights
- 10/12 mm tempered glass
- Latest generation pre-fibrillated grass





Padel Tech Pro Panoramic Court



The Padel Tech Pro Panoramic Court was the first court to improve spectator view with panoramic end and side panels that successfully eliminate the need for bulky pillars. The Pro Panoramic Court has a structure designed and manufactured with maximum precision to ensure it can be erected and assembled in any location. Its components fit together easily with no welding required during the installation process. Manufactured with 3mm thick pillars on end walls and 2mm pillars on side walls with mesh infill panels designed to avoid injuries and allow alignment with 12mm glass panels. The standard playing surface is polypropylene mono-filament synthetic grass with 60,000 stitches/m²: the ideal court for landmark facilities.

- Mesh folded with anti-injury system
- Laser cut anchor plates with an opening to insert pillars
- 2.2m high World Padel Tour door
- Hidden net adjuster in central post
- 8 x 400W halide floodlights as standard - LED available
- 12 mm tempered glass
- Latest generation Desso Sports monofilament artificial grass





Padel Tech Pro RF Court



Padel Tech Pro Reinforced court is characterized by the robust design for sites demanding outdoor court in areas with strong winds and extreme weather. The use of brackets for reinforcements up to 1m high, all the steel in S355, class A1 steel and following hot dip galvanized make this the markets most robust and enhanced court.

The design of the padel court Padel Tech Pro RF is the result of a demanding design and structural calculation for areas where the wind and the weather forced to have a product that guarantees the safety and durability of all materials. Its robustness provided by additional reinforcing posts up to 1m high, double corner pillar, pillars of 3mm, extra wide base fixing plates for greater stability, 31cm x 25cm plates with 6 anchor points, height 2.20m output, polypropylene mono-filament grass with 66,000 stitches and floodlighting posts Led lighting make this a tough court to beat.

- S355 class A1 steel hot dip galvanized
- Double corner pillars
- Additional reinforcing posts up to 1m high
- Continuous mesh mounted flush to the glass using a folding technique
- Anchor plates cut with laser to allow the posts in insert
- 2.2m high World Padel Tour door
- Net tensioner within the central post
- 4 lights led 238W
- 12 mm tempered glass
- Latest generation DESSO mono-filament artificial grass





Padel Tech Try&Buy Court



Our team of designers and engineers have created a completely portable court. This court does not require any ground anchors and buy utilising a unique system of perimeter plates which the structure is fixed you do not need to make any type of civil works. It is ideal for installation in clubs or facilities who want to test the success of the sport before buying a court. The trial court can then be taken down and reinstalled permanently. All that is required is a flat surface, a tennis court is ideal however we can install a sub base for un-level installations if required.

The Padel Tech Try&Buy allows you to transport this magnificent sport to any location in the world and is perfect for all kinds of sporting or promotional events thanks to the ease to install.

- **Perimeter system galvanized plates**
- **No ground anchorage required**
- **Continuous mesh mounted flush to the glass using a folding technique**
- **10 mm tempered glass**
- **8 x 400W halide floodlights**
- **2.2m high World Padel Tour door**
- **Latest generation DESSO mono-filament artificial grass**





Artificial grass

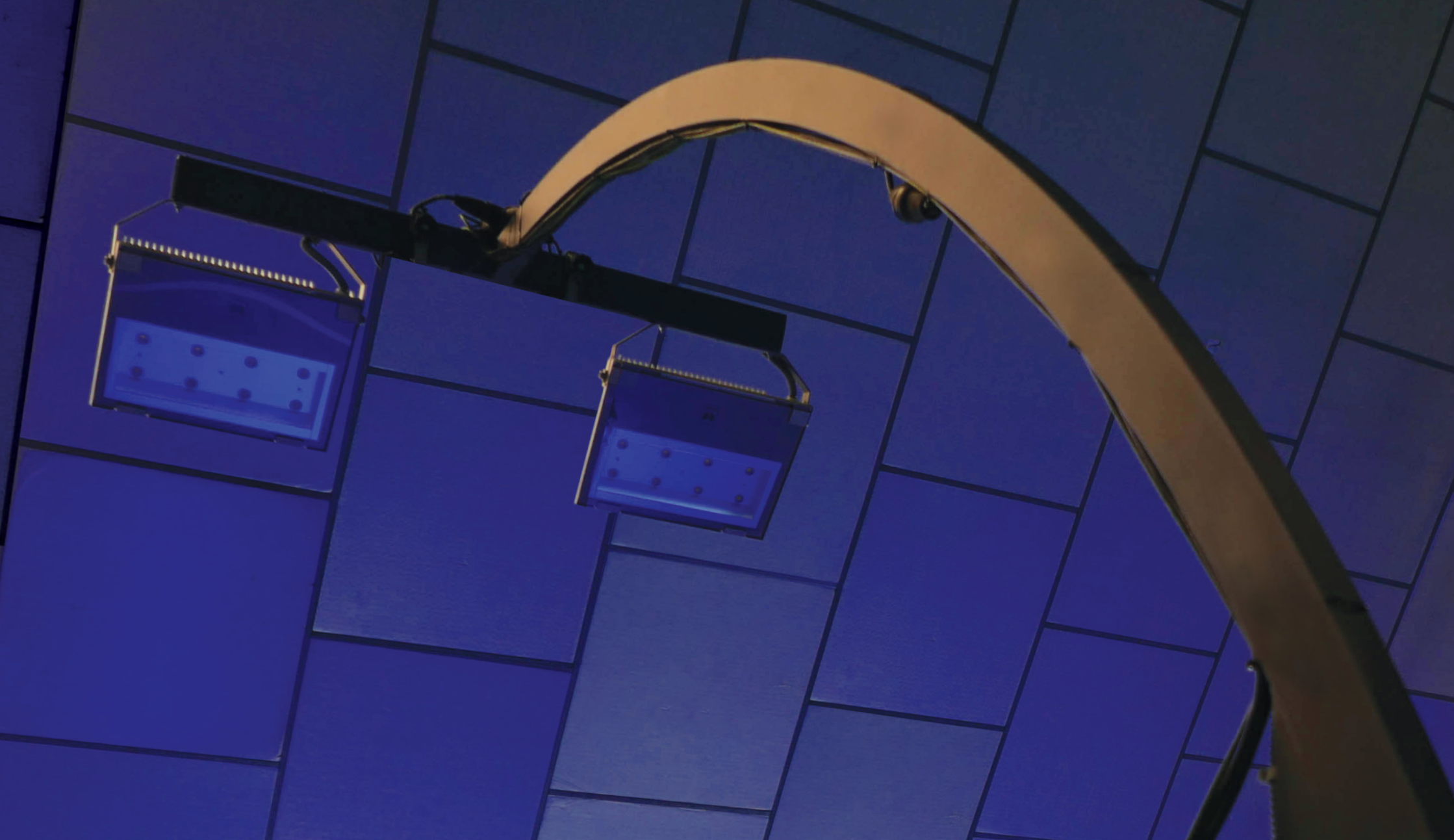


The latest generation of artificial grass surfaces has revolutionized the world of padel tennis, but it is essential to know the differences between the various types of grass available, their correct installation, how to get the best performance out of the surface during the game, preventing injuries, and the durability of the fibres.

We collaborate closely with our suppliers to find and offer the best products on the market. This, combined with our contribution and regular meetings with their technical departments and on the manufacturing process, has meant that we are able to offer our clients the best artificial grass surfaces available for the game of padel.

- Polypropylene mono-filament fibre
- Synthetic turf using 8800 dtex fibre
- 66.000 tufts/m²
- 11 mm height





Lighting



In order to provide a padel court with perfect lighting, the minimum lighting levels required should be taken into account along with a light study of the specific facilities in question for every facility. A completely even lighting spread is achieved through the use of new generation halide lamps or LED bulbs.

The LED projectors manufactured exclusively for Padel Tech offer all facility types potential energy savings of around 70% as compared to halide lamps, eco-efficiency and long projector life.

LEDs can also be switched off and on unlike halide lamps that require a cooling down period. This makes LEDs popular with clubs as they are much more user friendly.

• **Led projector made in aluminium for interior and exterior of 238W or new 317W comprising:**

- Asymmetrical optic diffuser
- 5,000 Kelvin
- 5 Years of warranty

• **Metal halide projector for indoor and outdoor of 400W comprising:**

- Asymmetric optic diffuser
- Philips bulb
- 5 Years warranty





Canopies



We believe that in the UK any outdoor facility should consider a covered court as it will ensure your facility can be enjoyed 12 months of the year whatever the weather.

Quick boX by padel tech is elegant structure that allows the maximum amount of light and has a minimal footprint that is only slightly bigger than the padel court. A solid galvanized steel posted structure with a high tech polycarbonate roof covering held in extruded aluminium rib ensures the weather will be kept at bay throughout the year.

During the course of your canopy project, our team will support you with a full design and planning service and obtain all the necessary planning consents. We will issue fully detailed planning and construction drawings to ensure a successful installation.



Maintenance



In order to ensure the best performance of your artificial grass to create the ideal playing surface, a minimum care and maintenance routine must be followed on a regular basis. We consider such maintenance to be a necessity rather than a luxury, allowing users to enjoy a surface in perfect conditions for longer.

At Padel Tech Padel we offer training and maintenance programmes for all facilities in order to recover the condition of older courts and extend the life of new ones. We have our own staff with proven experience and specific machinery at our disposal for this purpose.





PADE**TECH™**

PADE**TECH™**



Padel Tech Ltd

93 George Street · Edinburgh

Te: +44 131 243 2560 · info@padeltech.co.uk · www.padeltech.co.uk